



**Lower Niobrara Natural Resources District**  
410 Walnut Street, P.O. Box 350  
Butte, NE 68722-0350

Phone: (402) 775-2343  
Fax: (402) 775-2334



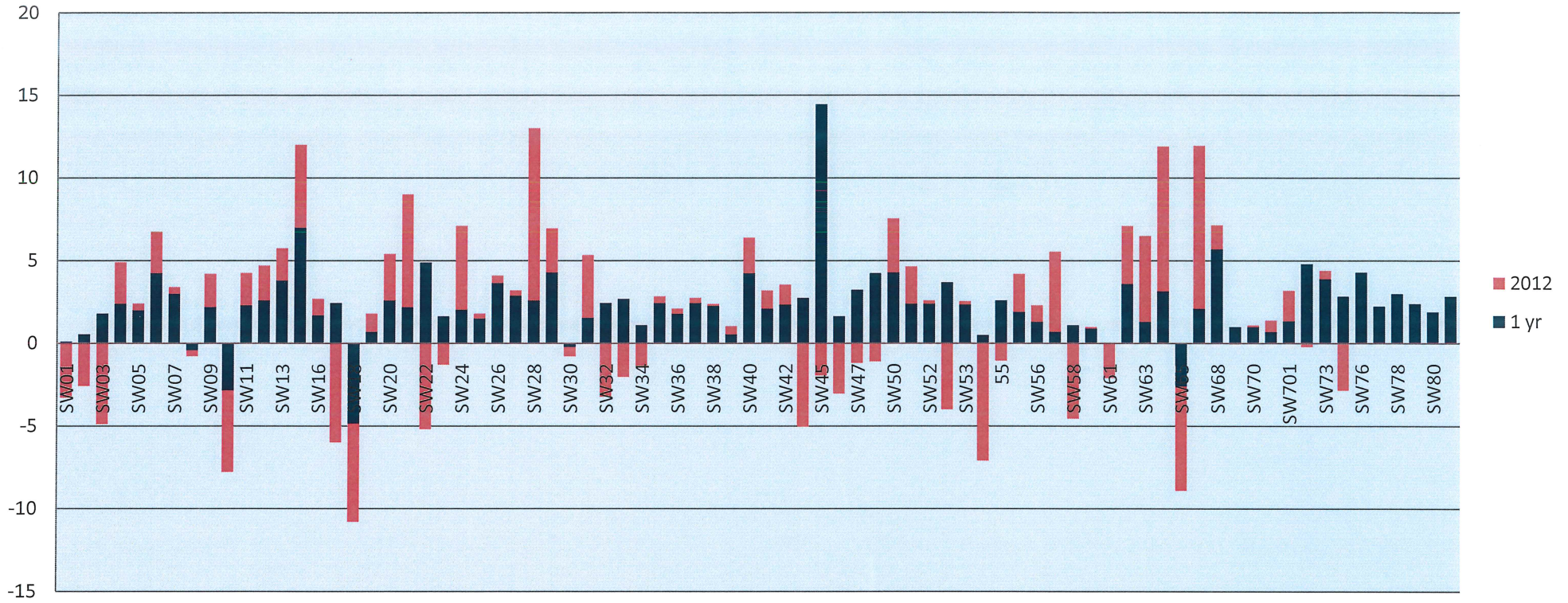
## 2019 Spring Static Water Level Report



**Wade Ellwanger**  
Water Resources Coordinator



## Individual Well SWL Changes



The **blue** line for each well indicates the change from 2018.  
 The **red** line for each well indicates the change from 2012.

### Well changes from 2018

73 wells increased SWL  
 5 wells decreased SWL

0 wells had no change in SWL

Range of SWL change = **-4.85' to +14.45'**

Average change in SWL = **+2.295'**

### Well changes from 2012

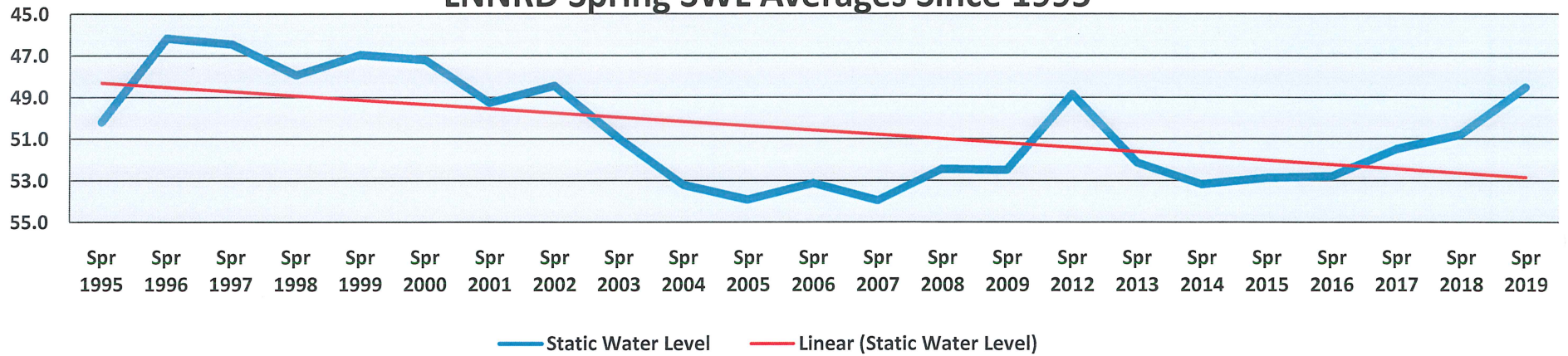
45 wells increased SWL  
 27 wells decreased SWL  
 0 wells had no change in SWL

Range of SWL change = **-6.3' to +10.4'**

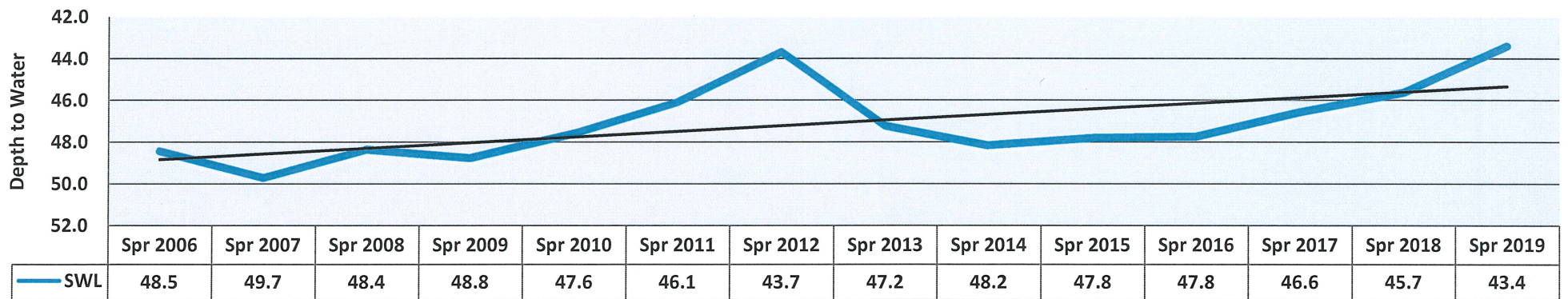
Average change in SWL = **+0.32'**



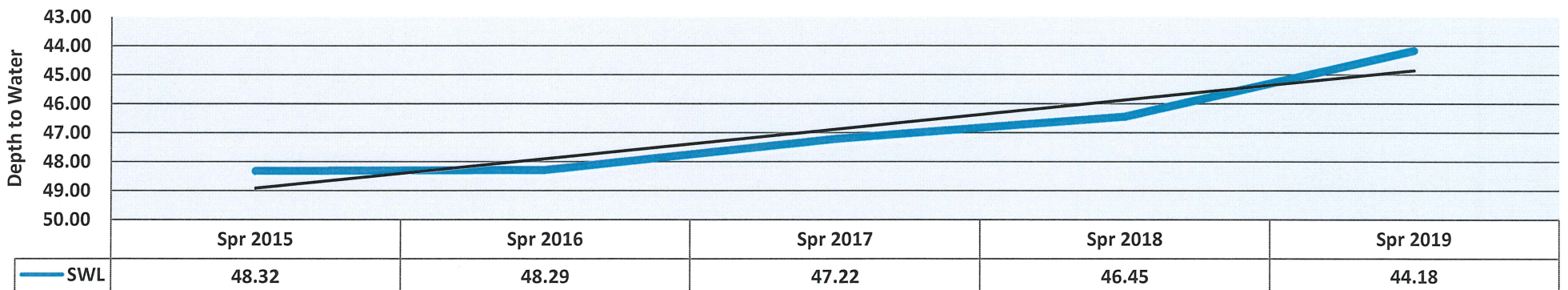
### LNNRD Spring SWL Averages Since 1995



### LNNRD Spring SWL Averages Since 2006

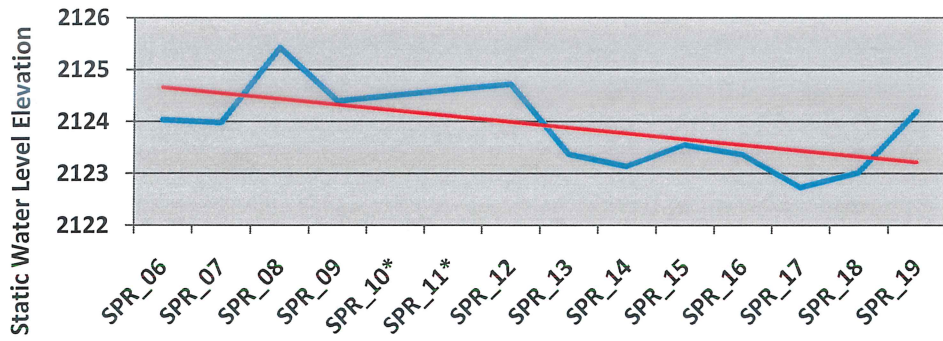


### LNNRD Spring SWL Averages Since 2015

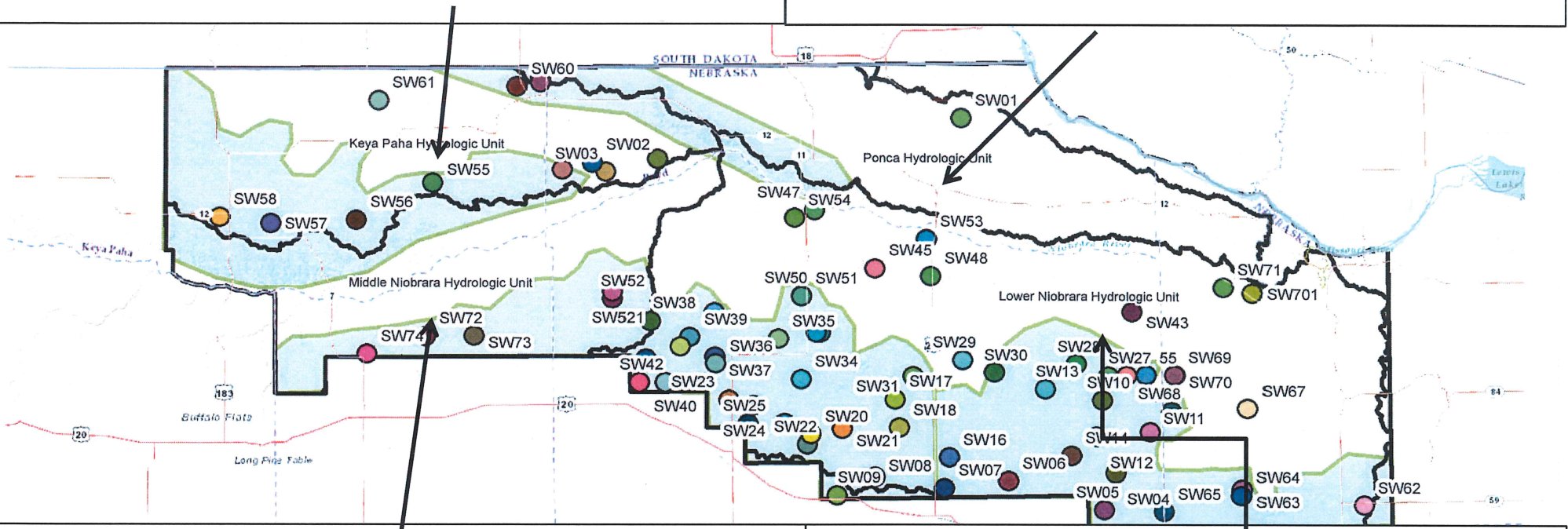
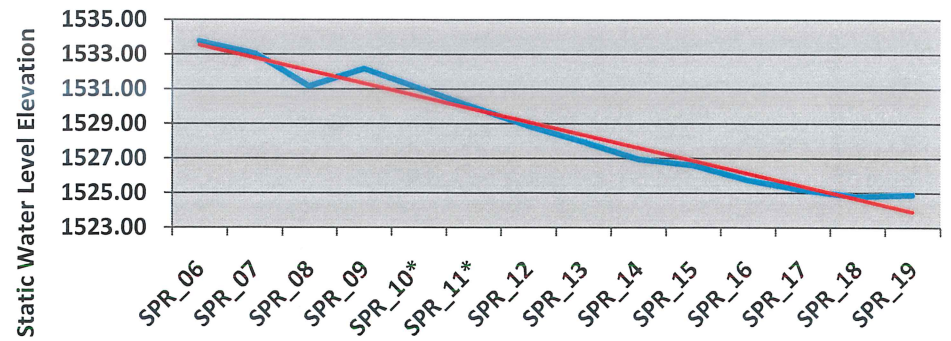




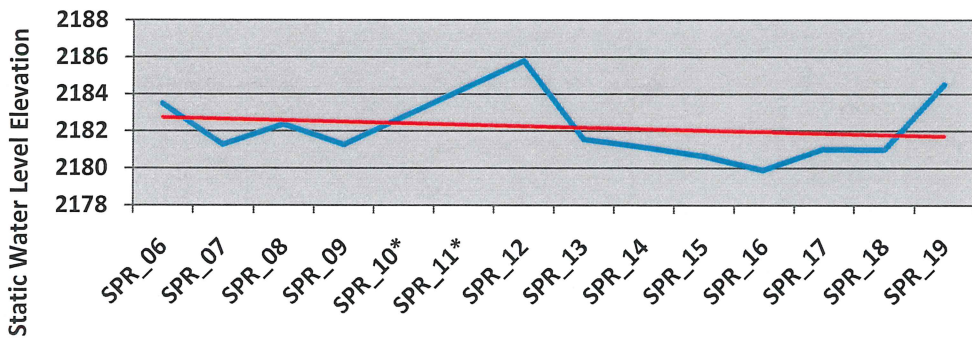
### Keya Paha Hydrologic Unit



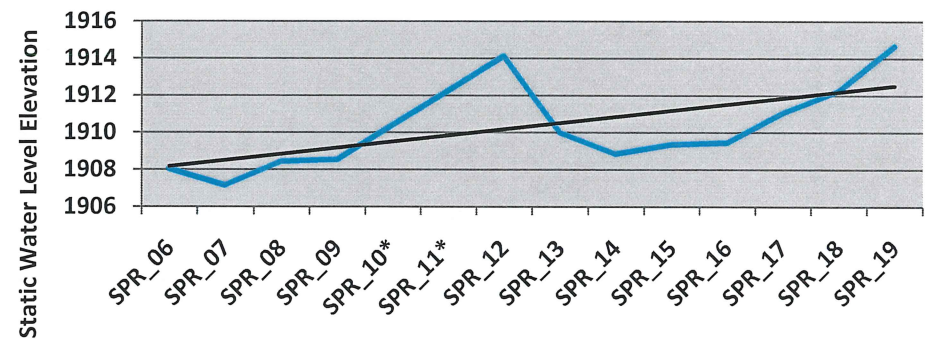
### Ponca Hydrologic Unit



### Middle Niobrara Hydrologic Unit



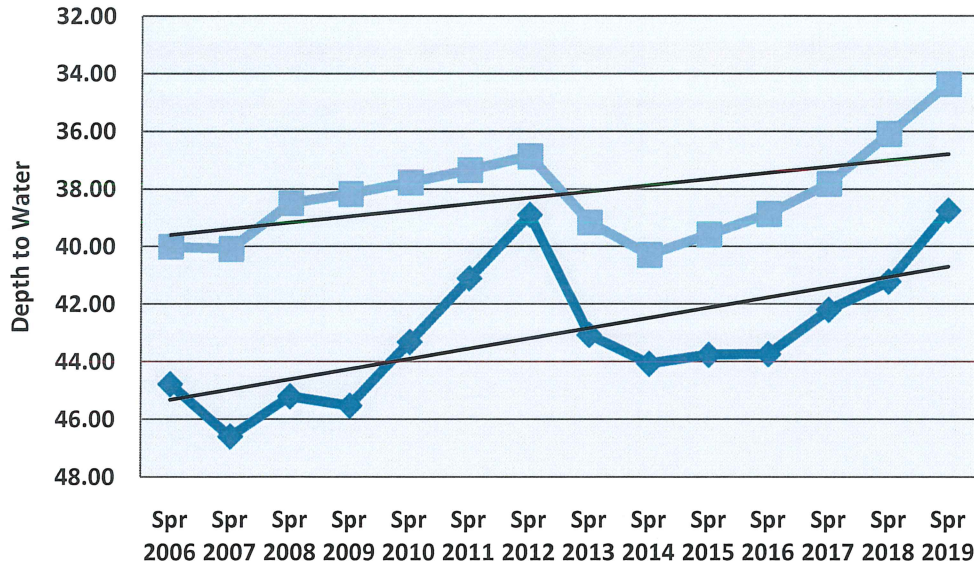
### Lower Niobrara Hydrologic Unit



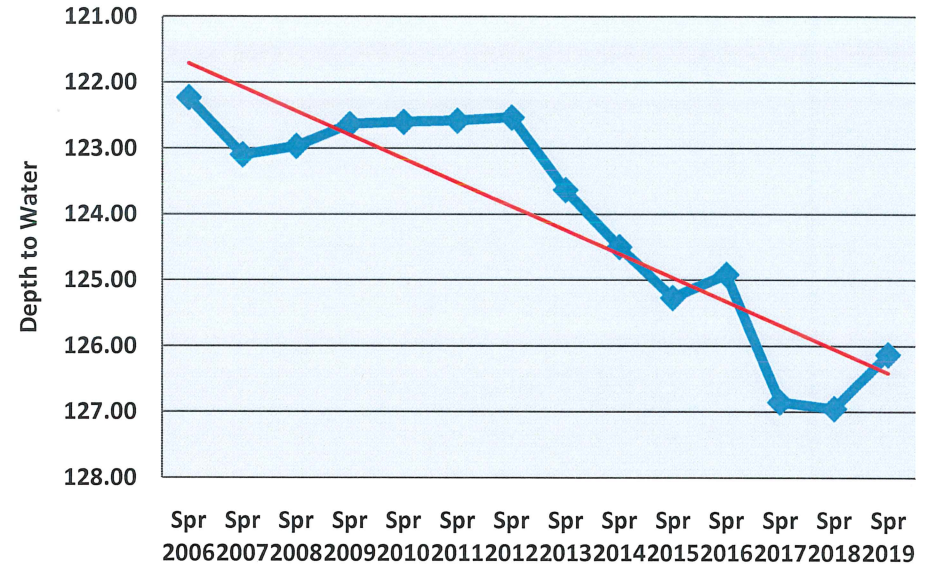


# LNNRD Spring Static Water Levels by County

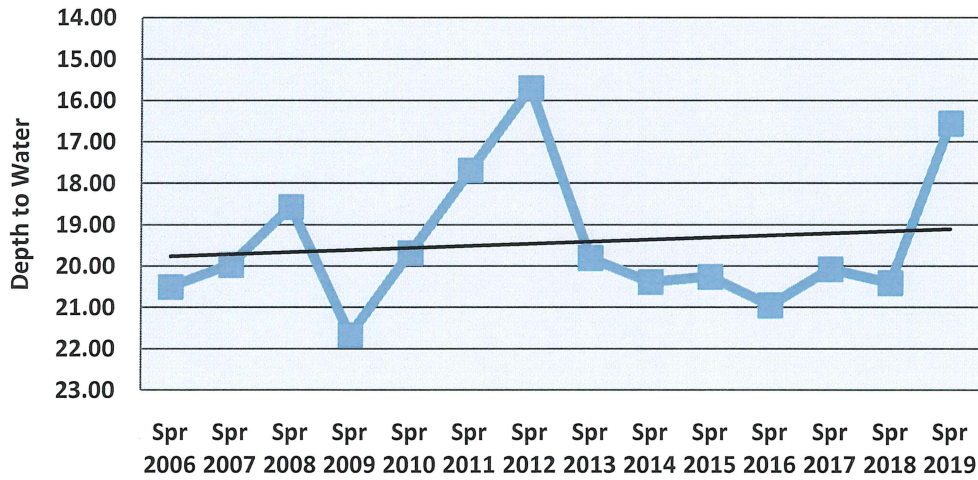
## Spring SWL in Holt and Knox Counties



## Spring SWL in Boyd County



## Spring SWL in Rock County



## Spring SWL in Keya Paha County

